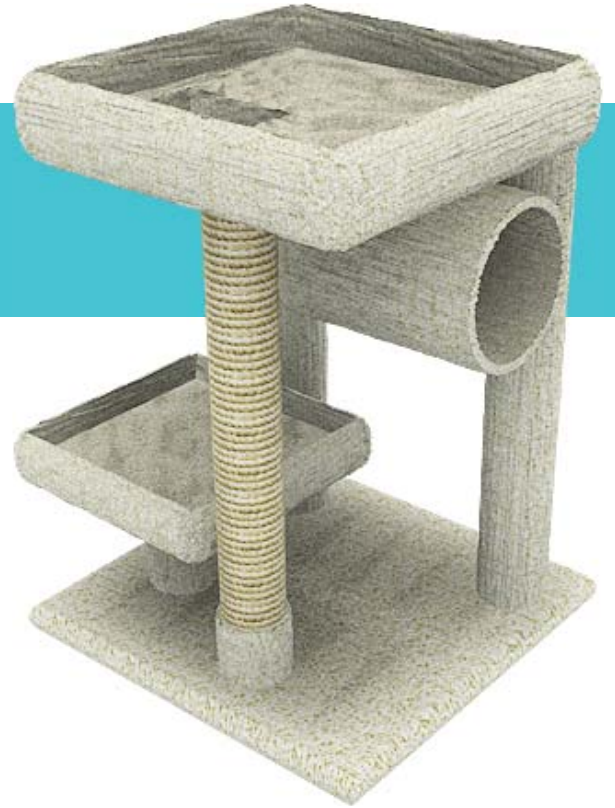


New Cat Condos

Assembly Instructions

Premier Cat Lounger

SKU: 110039



Package contents:

- 1 - Previously assembled stand
- 1 - Separate perch with pre-drilled screw holes
- 3 - Packaged wood screws

Required tools:

- 1 - Power drill (a hand screwdriver can be used but is not recommended)

Follow these easy steps:

- 1** In a large, open area, open the box and remove all contents
- 2** Place the single perch on the open post which is attached to the bottom tier (the base). Be sure to line up the three pre-drilled screws with the post
- 3** Drill each screw into the post until they are flush against the bed and the bed is secure.
- 4** **OPTIONAL:** If you find the above method is difficult, you may use 2 inch or larger nails with flat tops (not included). Place them in the same positions as the screws and use a hammer to nail them down until they are flush with the bed surface.

